

MAISONS



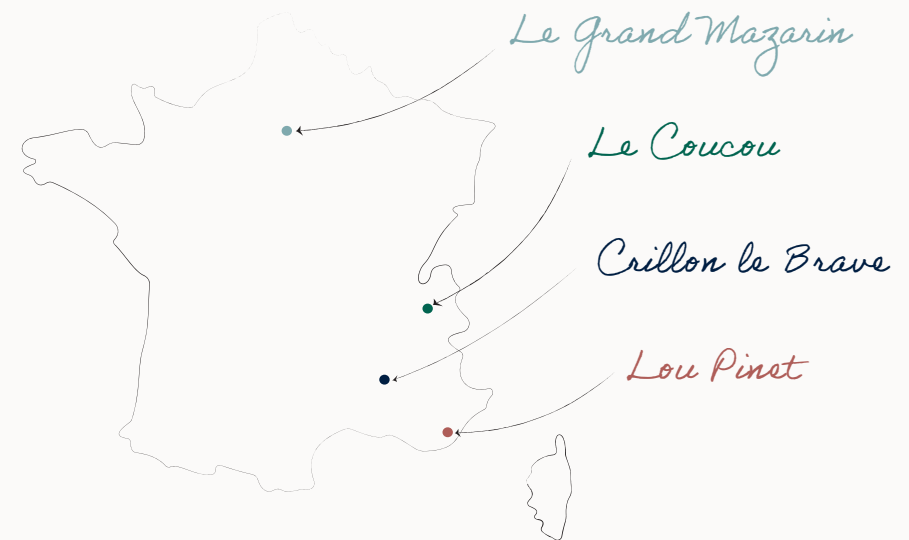
**HÔTELS
DE FAMILLE**

PARIENTE

Group & Event Brochure

Maisons Pariente is a contemporary family-run collection of five-star hotels, founded by Patrick Pariente and two of his daughters, Leslie Kouhana and Kimberley Cohen. Located in extraordinary places, each hotel is designed as an elegant private home and reveals a singular and arty personality, in perfect symbiosis with its environment. Our addresses invite you to experience simple yet warm hotel luxury. The Maisons Pariente spirit.

The Collection includes four hotels : *Crillon le Brave* in Provence, *Lou Pinet* in Saint-Tropez, *Le Coucou* in Méribel and *Le Grand Mazarin* in Paris.





LE GRAND MAZARIN



Located in le Marais, just a stone's throw from the Hôtel de Ville, close to the Seine, at the corner of rue de la Verrerie and rue des Archives, Le Grand Mazarin invites you to experience Paris.

The city of lights invites tourists to explore the charming surprises and unusual discoveries the city has to offer. Both visionary and cosmopolitan, le Marais has become the epicentre of new trends. A lively and avant-garde district, sparkling with creativity and vibrancy both day and night.

61 Rooms,

50 rooms and 11 suites
on 6 floors

1 Restaurant & 2 bars,

Boubalé and its Patio, Bar de
Boubalé and Library Bar

Spa,

Indoor swimming pool,
hammam, jacuzzi and fitness



Rooms



Food



Spa

Celebrate your events in Paris

Everything is in place to make Le Grand Mazarin the destination for a unique Parisian experience, at any time of day: a delightful restaurant, a surprising bar where each evening is a new experience, an extraordinary swimming pool and excellent service.

In this grand hotel, the Maisons Pariente spirit is embodied in the form of Parisian luxury.

To curate the most beautiful experience, each detail is directed by our talented team of Le Grand Mazarin.

Olivier Fernandez,
General Manager





Rooms & Suites

In the 50 rooms and 11 suites, interior architecture *Martin Brudnizki Design Studio* has given free rein to its imagination to create singular worlds inspired by Grand Siècle classicism. The decor is full of character, bathed in natural light, with a focus on perfect comfort, where guests can live in total intimacy.

3 room categories:

- * 5 Classic Rooms (from 215 sq.ft / 20m²)
- * 23 Superior Rooms (from 250 sq.ft / 23m²)
- * 19 Deluxe Rooms (from 300 sq.ft / 28m²)

3 suite categories:

- * 8 Parisian Junior Suites (from 375 sq.ft / 35m²)
- * 4 Grand Parisian Junior Suites (from 430 sq.ft / 40m²)
- * 3 one-bedroom Mazarin Suites (from 490 sq.ft / 45m²)

Services included:

- * Non-alcoholic beverages in the mini bar
- * Swimming pool, jacuzzi, hammam and fitness access
- * Concierge & butler service
- * Daily coffee and tea
- * Service & taxes





BOUBALÉ

1420 sq.ft / 132m²

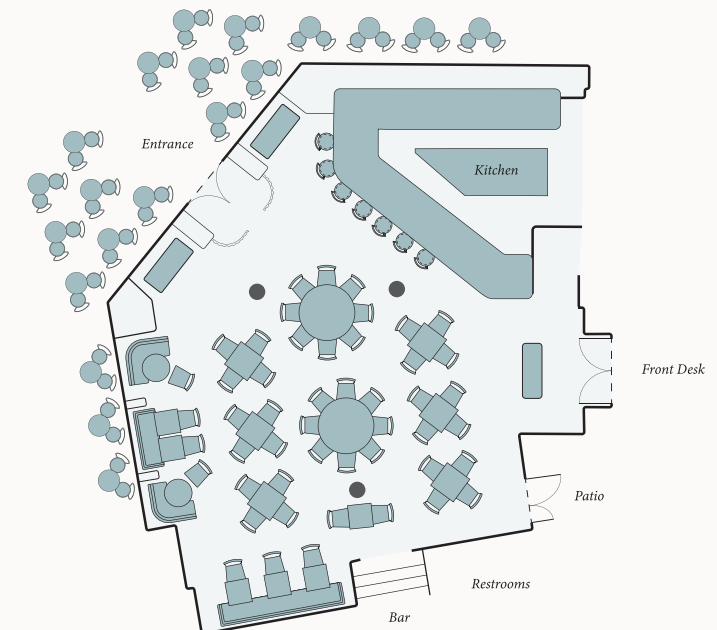
Up to **75** persons | *Regular set-up*

Up to **120** persons | *Cocktail set-up*



Boubalé tells the story of a love affair with cooking that goes back to the dawn of time. It's a story that began on the edge of *Eastern Europe*, traveled to *Jerusalem* and then stopped off in *Paris*, in the Marais district. The concept of Boubalé revolves around the idea of *generosity and warmth*.

Restaurant Boubalé can be privatized for seated dinner or cocktails, along with our other event spaces.



Patio

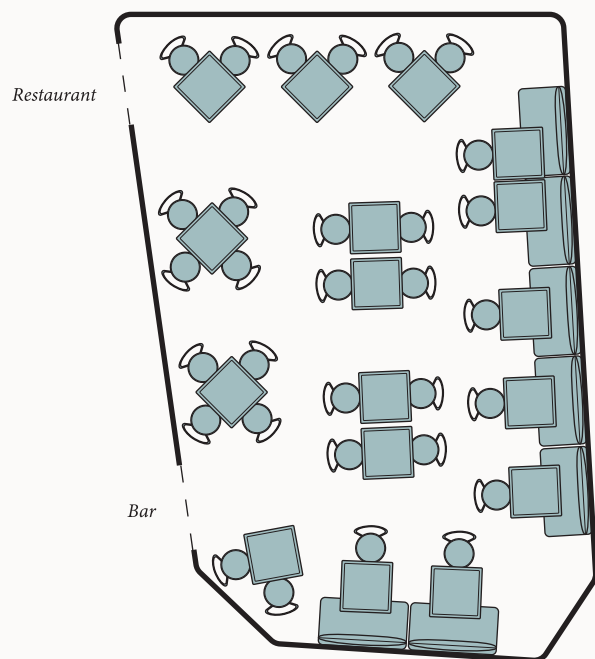
540 sq.ft / 50m²

Regular set-up | Up to **45** guests

Cocktail set-up | Up to **50** guests

The Patio is a unique space, highlighted by artist Sophia Pega. The intimate decor exalts a moving elegance. Perfect place for cocktails or private lunches and dinner.

The retractable roof makes it **perfect all-year long**: at summer, it is a calm **open sky** space. At winter, heaters and roof make it the perfect place for private groups lunches and dinners.





Le Bar de Boubalé

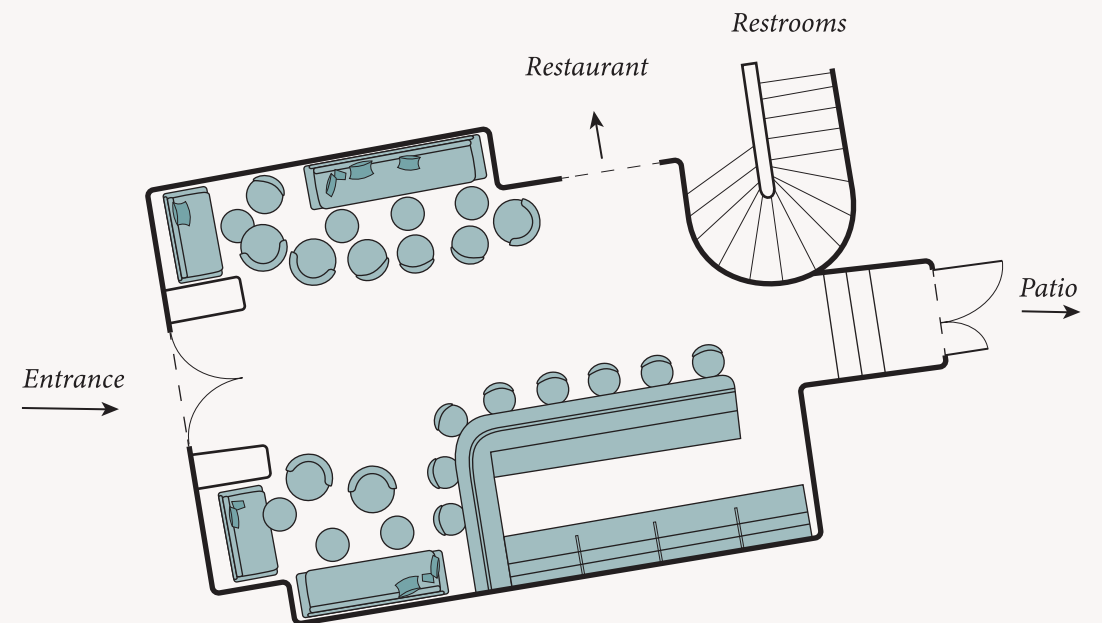
580 sq.ft / 53m²

Up to **45** persons | *Cocktail set-up*

Up to **28** persons | *Regular set-up*

Here, the atmosphere works its magic, offering moments of divine tranquility or vibrant excitement. The subtle aromas of the *signature cocktails* and *eclectic menu* do the rest.

The *warm and chic* decor creates an ideal ambiance for engaging in endless conversations, where the world can be remade and the joy of sharing becomes infinite, even as the night grows late.



Library Bar

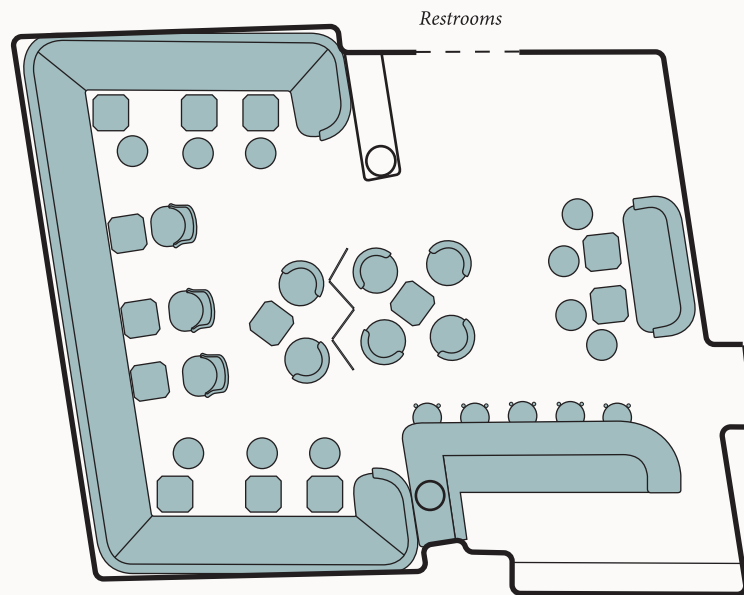
810 sq.ft / 75m²

Festive set-up | Up to **65** guests

Regular set-up | Up to **38** guests

Nestled in the depths of Le Grand Mazarin a modular, changeable decor ; unexpected and unforgettable for sure.

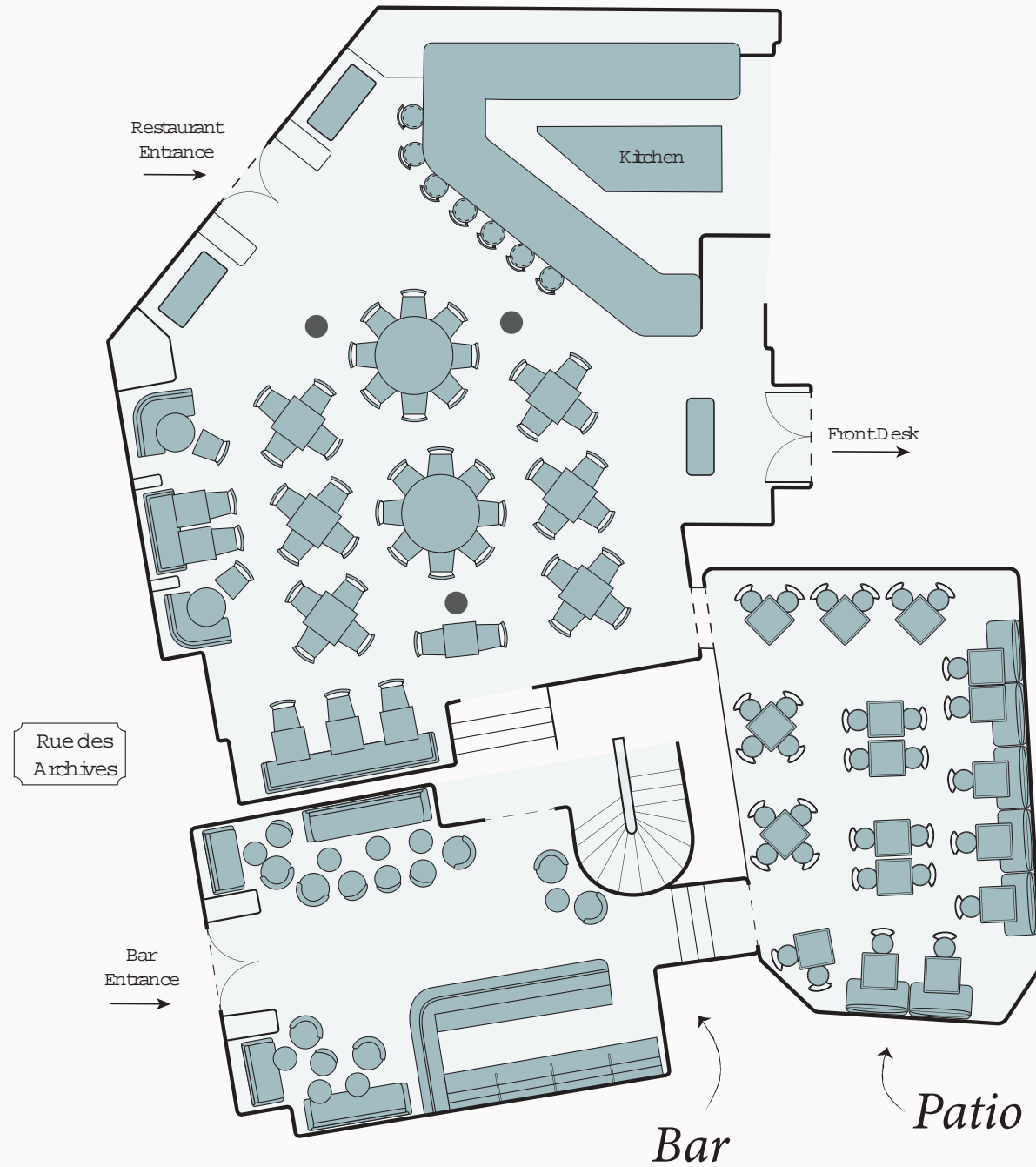
You can organize private parties with food, signature cocktails, DJ, karaoke as well as all your creative ideas.



Capacity charts

<i>Seated</i>			<i>Cocktail</i>
<i>Capacity</i>	<i>Sqm/Sqft</i>		<i>Capacity</i>
75	132/1420	<i>Boubalé</i>	120
45	50/540	<i>Patio</i>	50
28	53/580	<i>Bar</i>	45
38	75/810	<i>Librairy Bar</i>	65







Rates

Privatization

Restaurant Boubalé	from 6 600€
Jardin d'Hiver	from 2 750€
Bar de Boubalé	from 1 100€
Librairy Bar	from 2 750€
Full F&B spaces	from 17 600€

Food

Rates per person

Welcoming dinner	from 90€
Lunch	from 55€
Gala Dinner	from 110€

Rooms & Suites

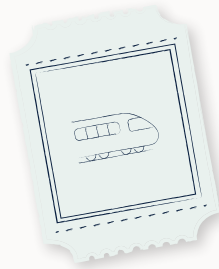
Rates per person

Classic Room	from 495€	Junior Suite	from 850€
Superior room	from 575€	Grand Junior Suite	from 850€
Deluxe Room	from 650€	Suite Mazarin	from 1 250€

How to reach us?



Charles de Gaulle (CDG) - 45 min
Orly (ORY) - 35 min
Le Bourget (LBG) - 30 min



Gare de Lyon - 8 min
Gare du Nord - 15 min
Gare Montparnasse - 15 min



17, rue de la Verrerie
75004 Paris
France



Groups & Events contact
Aurélie Martin
events@maisonspariente.com
+33 (0)4 90 65 99 11

Sales contact
Maxime Denis
m.denis@maisonspariente.com
+33 (0)6 03 68 67 01

www.legrandmazarin.com